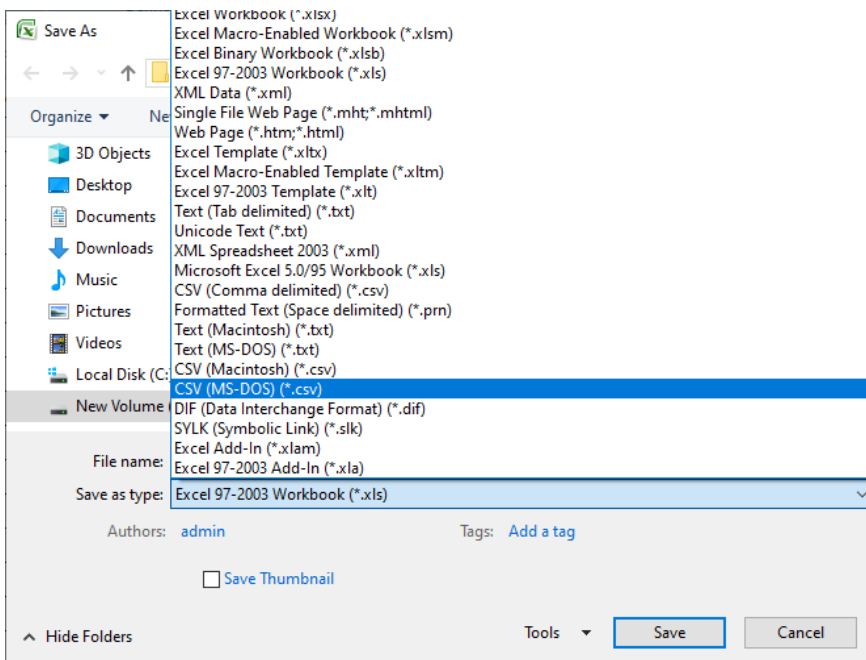
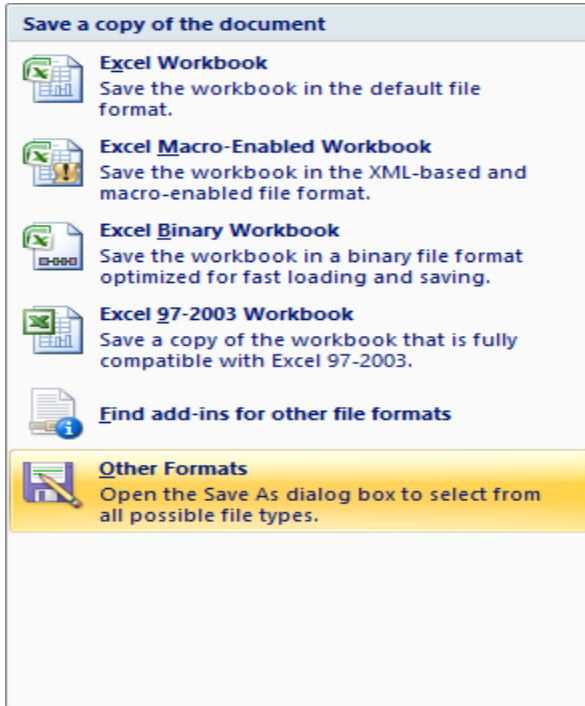
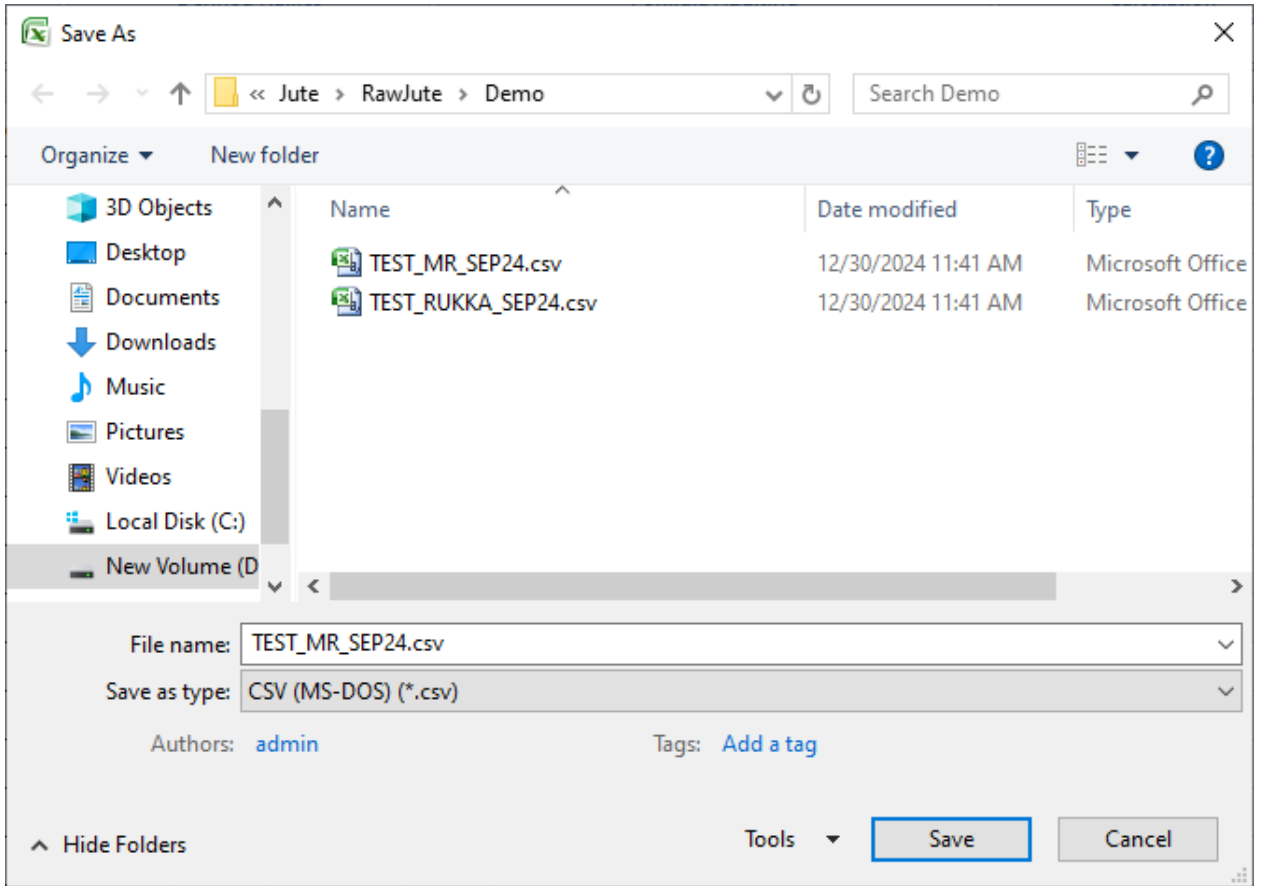


Process to Upload *.Csv File into Jute Smart Application

1. Save the *.xls file into *.csv file

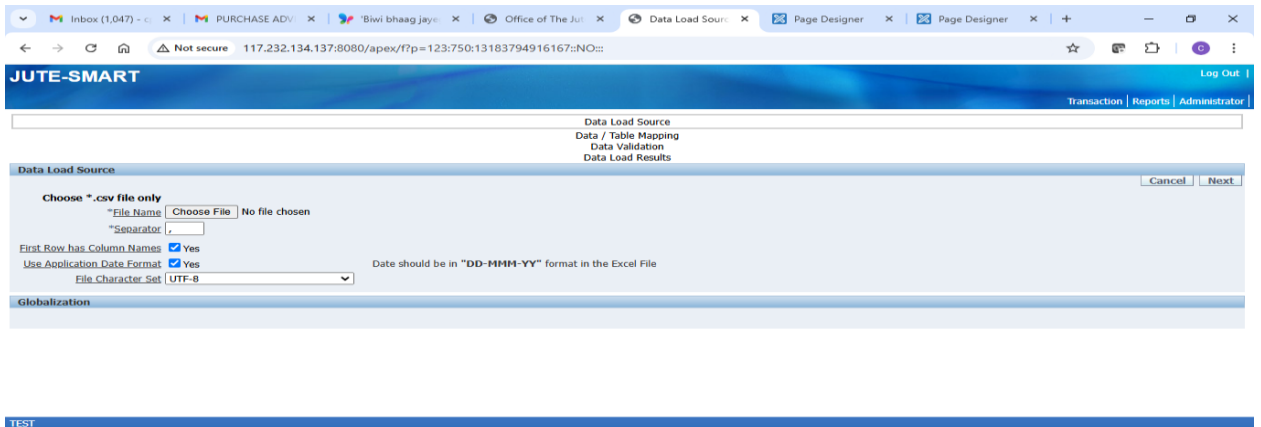
Open the *.xls file. Click on 'Office' icon and select the option as shown in the screenshot





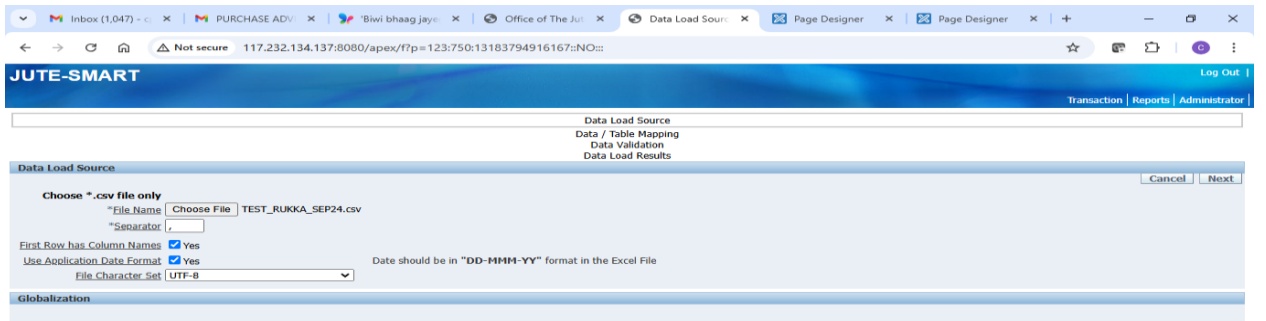
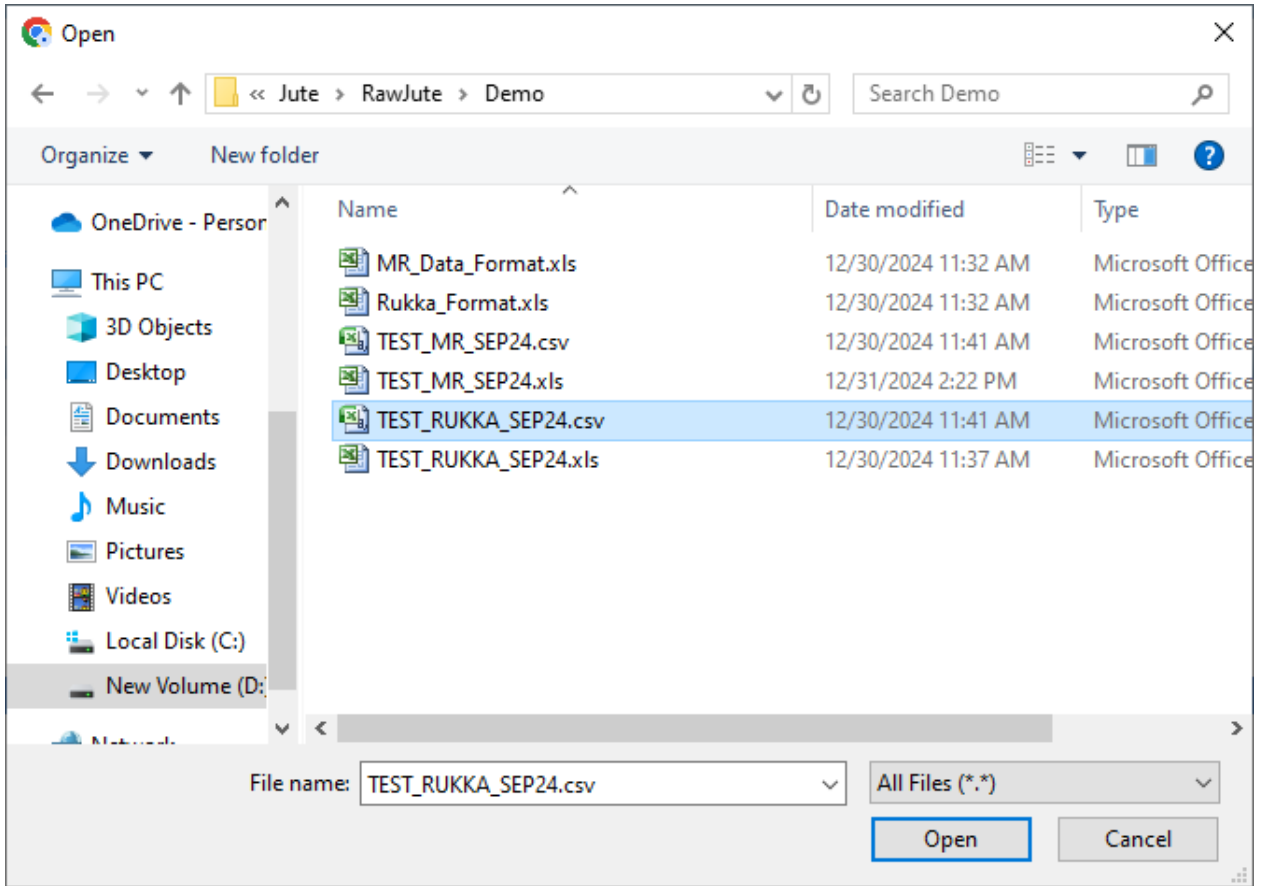
Save the file in the *.csv format.

2. Open Jute Smart application goto the link
Click on 'Rukka Upload from Excel' Link



It will open the form as shown above.

Select the *.csv file from the 'choose file' button



TEST

```
javascript:apex.widget.textareaClob.upload('P750_COPY_PASTE', 'NEXT');
```

The file name is selected.

Now click on the 'Next' Button

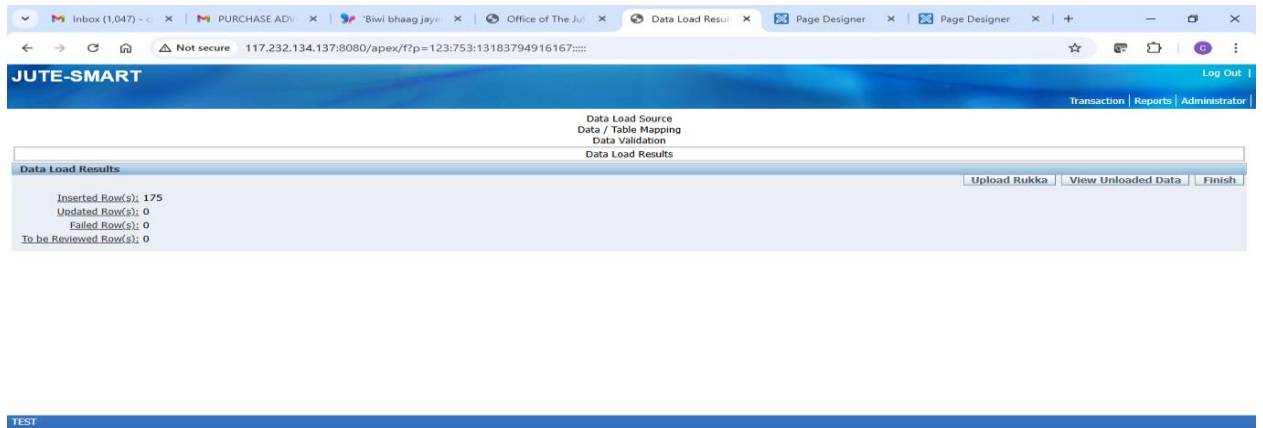
Column Mapping	MILL_LOGIN - v	PO_RUKA - va	PO_RUKA_DA	BROKER - vari	SUPPLIER - va	MUKAM - vari	STATE_ORIGI	LOC_ORIGIN -
Row1	TEST	RK/24-25/0298	1-Sep-24	PUNRASAR SPECIALITIES CO. PRIVATE LIMITED	HULASH CHAND BOTHRA	PURNIA	BIHAR	Other than Sout
Row2	TEST	RK/24-25/0299	5-Sep-24	PUNRASAR SPECIALITIES CO. PRIVATE LIMITED	SREE KRISHNA GOLDEN FIBRE	TRIMOHINI	WEST BENGAL	SOUTH BENGAL
Row3	TEST	RK/24-25/0299	5-Sep-24	PUNRASAR SPECIALITIES CO. PRIVATE LIMITED	SREE KRISHNA GOLDEN FIBRE	TRIMOHINI	WEST BENGAL	SOUTH BENGAL
Row4	TEST	RK/24-25/0300	5-Sep-24	PUNRASAR SPECIALITIES CO. PRIVATE LIMITED	SANVI TRADING CO	KISHANGANJ	BIHAR	Other than Sout
Row5	TEST	RK/24-25/0301	5-Sep-24	PUNRASAR SPECIALITIES CO. PRIVATE LIMITED	TARAKNATH ENTERPRISE	KARIMPUR	WEST BENGAL	SOUTH BENGAL
Row6	TEST	RK/24-25/0301	5-Sep-24	PUNRASAR SPECIALITIES CO. PRIVATE LIMITED	TARAKNATH ENTERPRISE	KARIMPUR	WEST BENGAL	SOUTH BENGAL
Row7	TEST	RK/24-25/0302	6-Sep-24	PUNRASAR SPECIALITIES CO. PRIVATE LIMITED	MAANEK UDYOG	ANDULIA	WEST BENGAL	SOUTH BENGAL
Row8	TEST	RK/24-25/0302	6-Sep-24	PUNRASAR SPECIALITIES CO. PRIVATE LIMITED	MAANEK UDYOG	ANDULIA	WEST BENGAL	SOUTH BENGAL
Row9	TEST	RK/24-25/0303	6-Sep-24	PUNRASAR SPECIALITIES CO. PRIVATE LIMITED	PANMALL BOTHRA & CO	JALANGI	WEST BENGAL	SOUTH BENGAL
Row10	TEST	RK/24-25/0303	6-Sep-24	PUNRASAR SPECIALITIES CO. PRIVATE LIMITED	PANMALL BOTHRA & CO	JALANGI	WEST BENGAL	SOUTH BENGAL
Row11	TEST	RK/24-25/0304	6-Sep-24	PUNRASAR SPECIALITIES CO. PRIVATE LIMITED	BAJRANG LAL RATHI	DHUPGURI	WEST BENGAL	Other than Sout
Row12	TEST	RK/24-25/0304	6-Sep-24	PUNRASAR SPECIALITIES CO. PRIVATE LIMITED	BAJRANG LAL RATHI	DHUPGURI	WEST BENGAL	Other than Sout
Row13	TEST	RK/24-25/0305	6-Sep-24	PUNRASAR SPECIALITIES CO. PRIVATE LIMITED	RUCHIKA VINIMAY PVT LTD	DHUPGURI	WEST BENGAL	Other than Sout
Row14	TEST	RK/24-25/0306	6-Sep-24	PUNRASAR SPECIALITIES CO. PRIVATE LIMITED	RUCHIKA VINIMAY PVT LTD	DHUPGURI	WEST BENGAL	Other than Sout
Row15	TEST	RK/24-25/0307	6-Sep-24	PUNRASAR SPECIALITIES CO. PRIVATE LIMITED	RUCHIKA VINIMAY PVT LTD	GANGARAMPUR	WEST BENGAL	Other than Sout
Row16	TEST	RK/24-25/0307	6-Sep-24	PUNRASAR SPECIALITIES CO. PRIVATE LIMITED	RUCHIKA VINIMAY PVT LTD	GANGARAMPUR	WEST BENGAL	Other than Sout
Row17	TEST	RK/24-25/0307	6-Sep-24	PUNRASAR SPECIALITIES CO. PRIVATE LIMITED	RUCHIKA VINIMAY PVT LTD	GANGARAMPUR	WEST BENGAL	Other than Sout
Row18	TEST	RK/24-25/0308	7-Sep-24	PUNRASAR SPECIALITIES CO. PRIVATE LIMITED	TARAKNATH ENTERPRISE	BADURIA	WEST BENGAL	SOUTH BENGAL

Excel file and the database table column mapping has to be in Sync. (This should be as per the *.Xls format shared by JC office for Rukka data)

Click on the 'Next' Button

JKA	PO_RUKA_DATE	BROKER	SUPPLIER	MUKAM	STATE_ORIGIN	LOC_ORIGIN	GRADE	QUANTITY	ORDER_RATE	REMARKS
8	1-Sep-24	PUNRASAR SPECIALITIES CO. PRIVATE LIMITED	HULASH CHAND BOTHRA	PURNIA	BIHAR	Other than South Bengal	TD8	3.00	4150.00	15 DAYS
9	5-Sep-24	PUNRASAR SPECIALITIES CO. PRIVATE LIMITED	SREE KRISHNA GOLDEN FIBRE	TRIMOHINI	WEST BENGAL	SOUTH BENGAL	TD5	60.00	4770.00	15 DAYS
9	5-Sep-24	PUNRASAR SPECIALITIES CO. PRIVATE LIMITED	SREE KRISHNA GOLDEN FIBRE	TRIMOHINI	WEST BENGAL	SOUTH BENGAL	TD6	53.20	4770.00	15 DAYS
0	5-Sep-24	PUNRASAR SPECIALITIES CO. PRIVATE LIMITED	SANVI TRADING CO	KISHANGANJ	BIHAR	Other than South Bengal	TD7	48.00	4800.00	15 DAYS
1	5-Sep-24	PUNRASAR SPECIALITIES CO. PRIVATE LIMITED	TARAKNATH ENTERPRISE	KARIMPUR	WEST BENGAL	SOUTH BENGAL	TD5	135.00	5300.00	15 DAYS
1	5-Sep-24	PUNRASAR SPECIALITIES CO. PRIVATE LIMITED	TARAKNATH ENTERPRISE	KARIMPUR	WEST BENGAL	SOUTH BENGAL	TD6	135.00	5000.00	15 DAYS

Click on the 'Load Data' Button



The No. of rows available in the *.csv file will be shown as 'Inserted Rows' value.

3. The same process has to be followed for MR Data Upload by clicking on the link 'MR Upload from Excel'

Note:

1. Please fill the Mill Login for the whole column
2. The date format should be in 'DD-MON-YY'
3. The upload file should be *.csv
4. For any issues please mail the issue in support mail.